


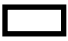



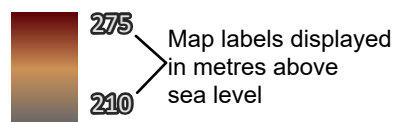
**Watershed Sub-basin and direction of flow**

-  Fisher River/ Washow Bay
-  Icelandic River/ Willow Creek
-  Netley Creek/ Grassmere Creek

**Other features**

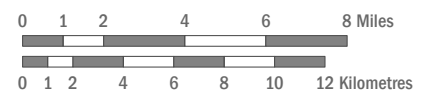
-  Municipal boundary
-  Water body

**Elevation (metres)**



**Map 7.3.5 - Watershed Flow**

Eastern Interlake Planning District  
Development Plan By-law 01-2022



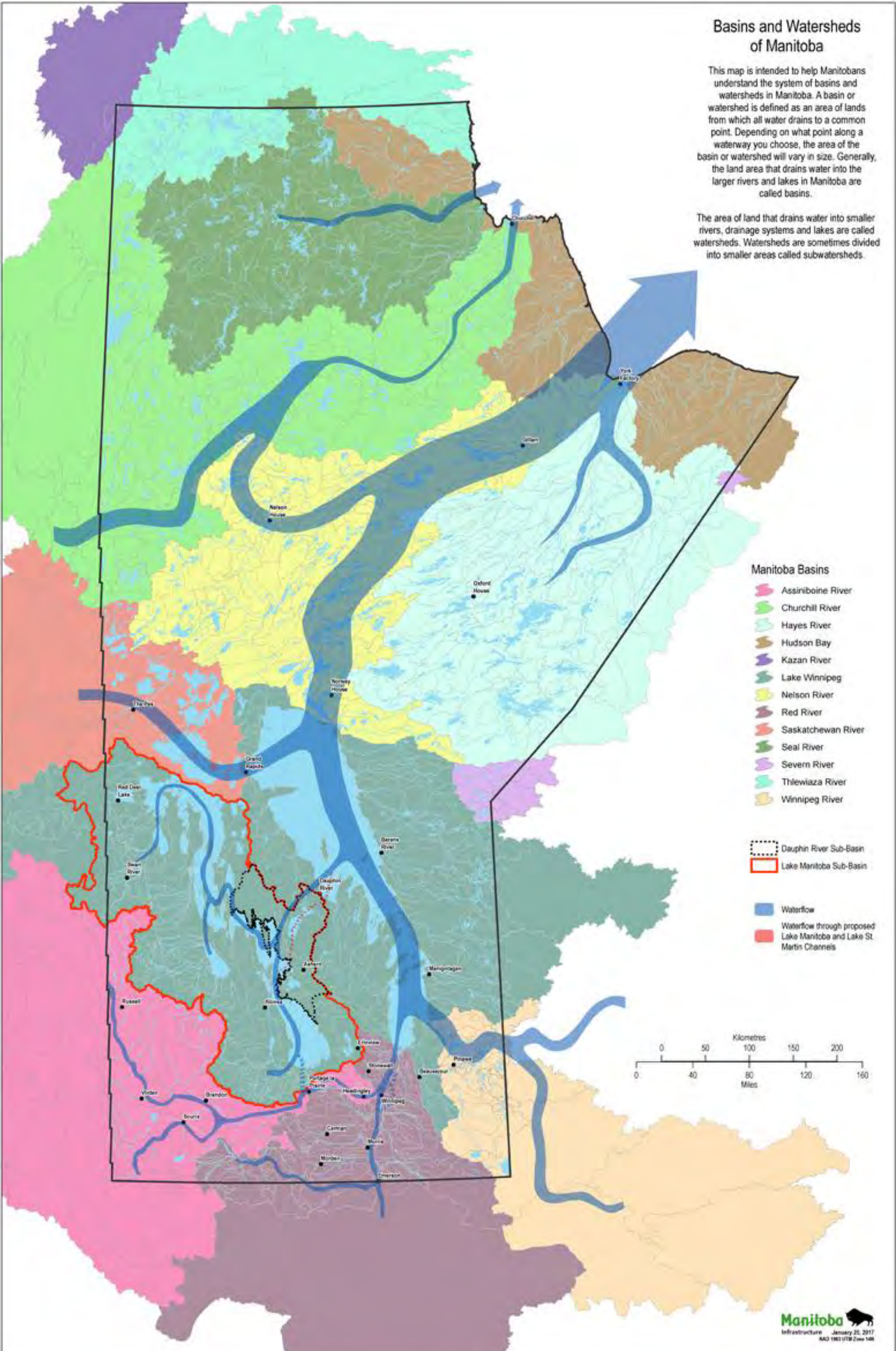
Map elevations are derived from Federal datasets from USGS and NRCAN, and are approximate. Elevations run from approximately 216 metres above sea level along Lake Winnipeg to the highest point of 268 metres along the western boundary of the RM of Bifrost-Riverton. All Sub-basins in the EIPD drain into Lake Winnipeg.



# Basins and Watersheds of Manitoba

This map is intended to help Manitobans understand the system of basins and watersheds in Manitoba. A basin or watershed is defined as an area of lands from which all water drains to a common point. Depending on what point along a waterway you choose, the area of the basin or watershed will vary in size. Generally, the land area that drains water into the larger rivers and lakes in Manitoba are called basins.

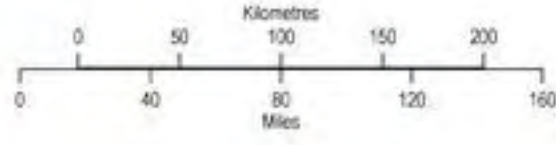
The area of land that drains water into smaller rivers, drainage systems and lakes are called watersheds. Watersheds are sometimes divided into smaller areas called subwatersheds.



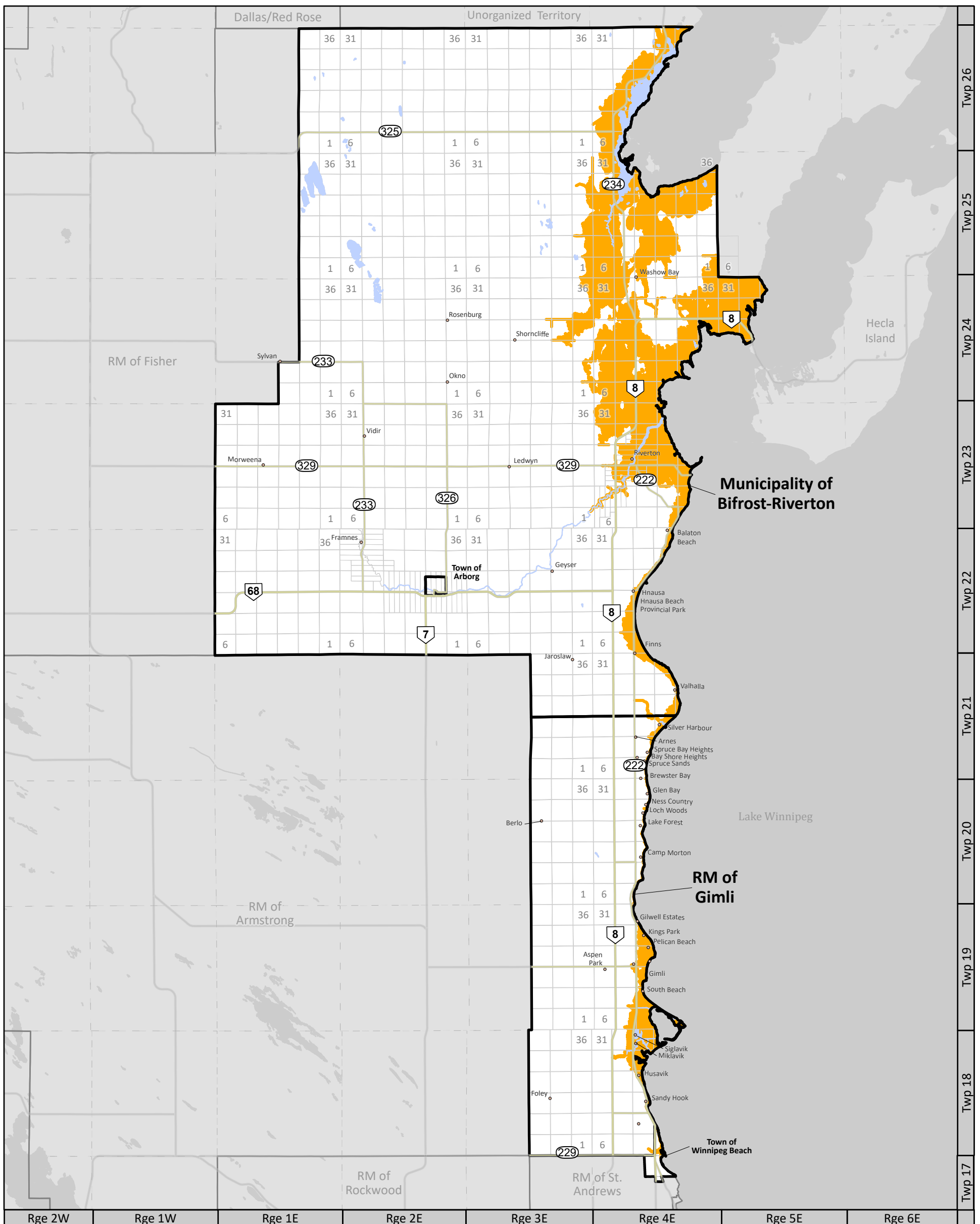
- Manitoba Basins**
- Assiniboine River
  - Churchill River
  - Hayes River
  - Hudson Bay
  - Kazan River
  - Lake Winnipeg
  - Nelson River
  - Red River
  - Saskatchewan River
  - Seal River
  - Severn River
  - Thlewiaza River
  - Winnipeg River

- Dauphin River Sub-Basin
- Lake Manitoba Sub-Basin

- Waterflow
- Waterflow through proposed Lake Manitoba and Lake St. Martin Channels





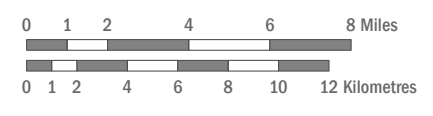


**Legend**

- Areas below the Flood Protection Level for Lake Winnipeg
- Provincial Trunk Highway
- Provincial Road
- Municipal boundary
- Water body

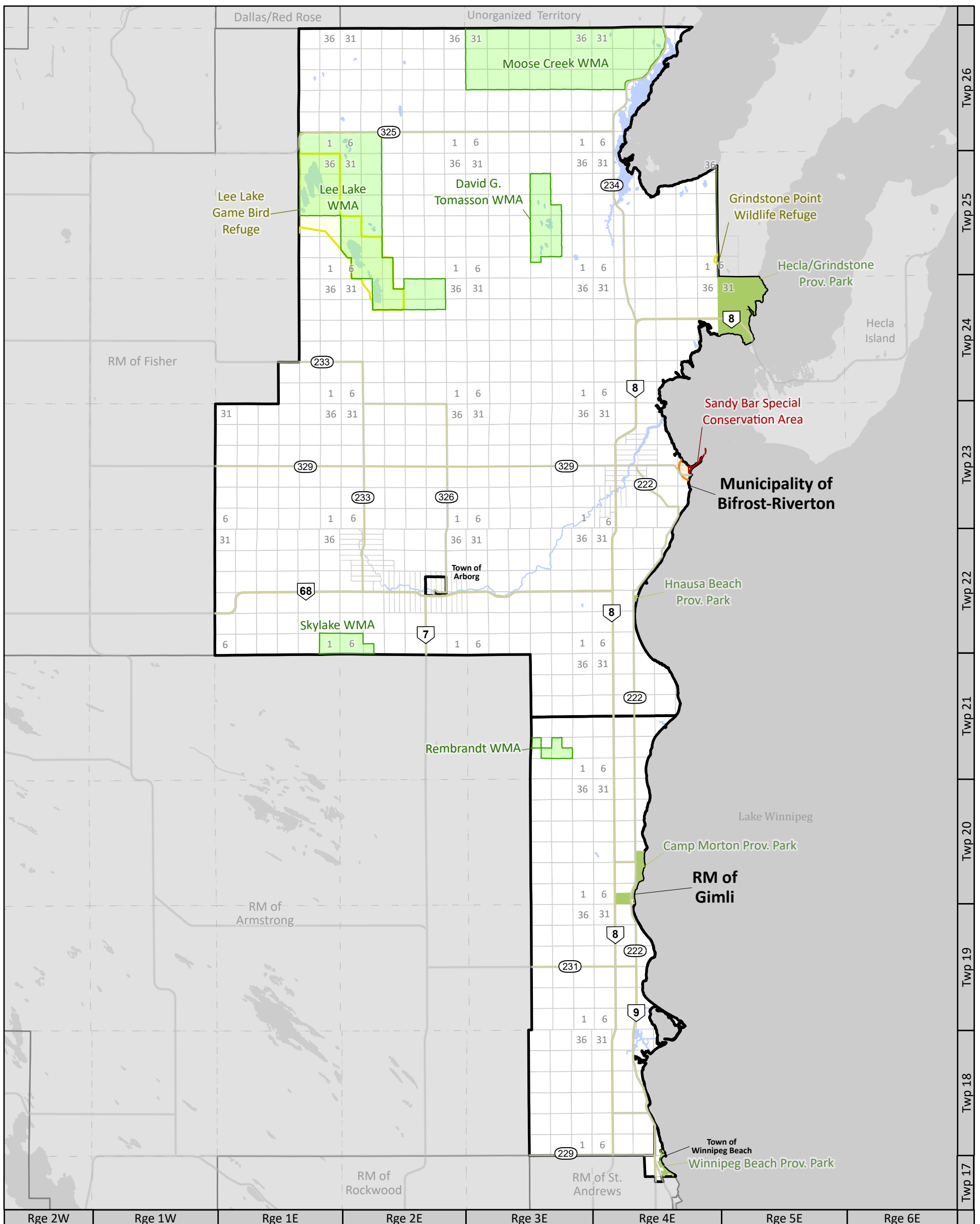
Source: Manitoba Infrastructure

**Map 7.3.7 - Watershed-Flood Data**  
 Eastern Interlake Planning District  
 Development Plan By-law 01-2022



May 27, 2022

NAD 1983 UTM Zone 14N



**Legend**

- Wildlife Management Areas
- Refuges
- Special Conservation Areas
- Provincial Park
- Important Bird Areas
- Municipal boundary
- Provincial Trunk Highway
- Provincial Road
- Water body

Wildlife Management Areas, Special Conservation Areas and Refuges are designated by the Designation of Wildlife Lands Regulation under The Wildlife Act (C.C.S.M. c.W130). Important Bird Areas are identified by BirdLife International.

**Map 7.3.8 - Wildlife-Habitat**  
 Eastern Interlake Planning District  
 Development Plan By-law 01-2022

